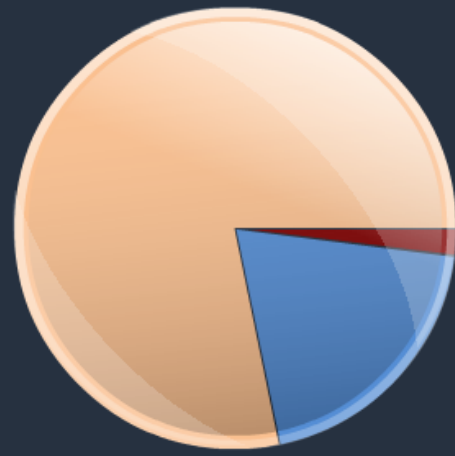


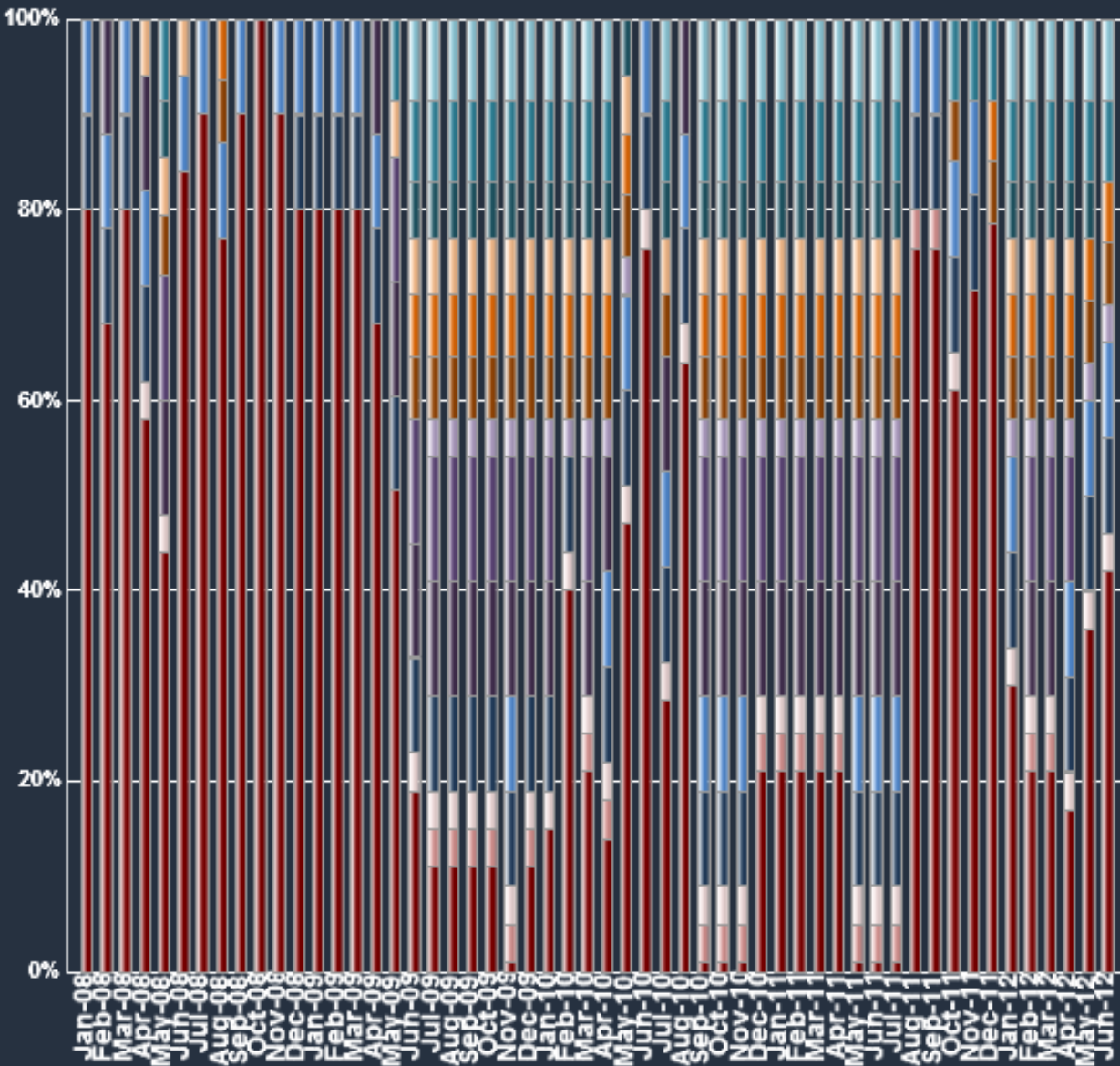
M1 Tactical Analysis Portfolio



- Cash (1%)
- Commodities (4%)
- Real Estate (4%)
- Govt. Corp (10%)
- Govt. Long Term (0%)
- Govt. Int Term (10%)
- Govt. Short Term (0%)
- Foreign Emer. (12%)
- Foreign Devel. (13%)
- Micro Cap (4%)
- Small Growth (6.5%)
- Small Value (6.5%)
- Mid Growth (6%)
- Mid Value (6%)
- Large Growth (8.5%)
- Large Value (8.5%)



- Cash (1%)
- Fixed Income (20%)
- Equities (79%)



- Cash
- Commodities
- Real Estate
- Govt. Corp
- Govt. Long Term
- Govt. Int Term
- Govt. Short Term
- Foreign Emer.
- Foreign Devel.
- Micro Cap
- Small Growth
- Small Value
- Mid Growth
- Mid Value
- Large Growth
- Large Value